

# **ES-HD-10D-IP851**

## **Quick Installation User Manual**



**V1.0**

**2016-01-04**

**1/11**

# Contents

<b>I . About IP Camera.....</b>	<b>3</b>
<b>II . Start The Camera.....</b>	<b>4</b>
<b>III. Operate the camera on computer end.....</b>	<b>5</b>
<b>IV. Viewing The Camera Via Mobile APP .....</b>	<b>7</b>
<b>V .WIFI Configuration.....</b>	<b>8</b>
<b>VI. Install Micro Card .....</b>	<b>9</b>
<b>VII. Micro SD card video setting.....</b>	<b>10</b>
<b>VIII. Reset the camera to factory default.....</b>	<b>11</b>

# I . About IP Camera

1.1 When receiving the IP Camera,pls check the packing details are including below accessories:



Power adaptor



CD



Screw

**Power adaptor\*1**  
**CD software\*1**  
**User manual\*1**  
**Screws \*1**  
**WiFi antenna\*1**



Color box



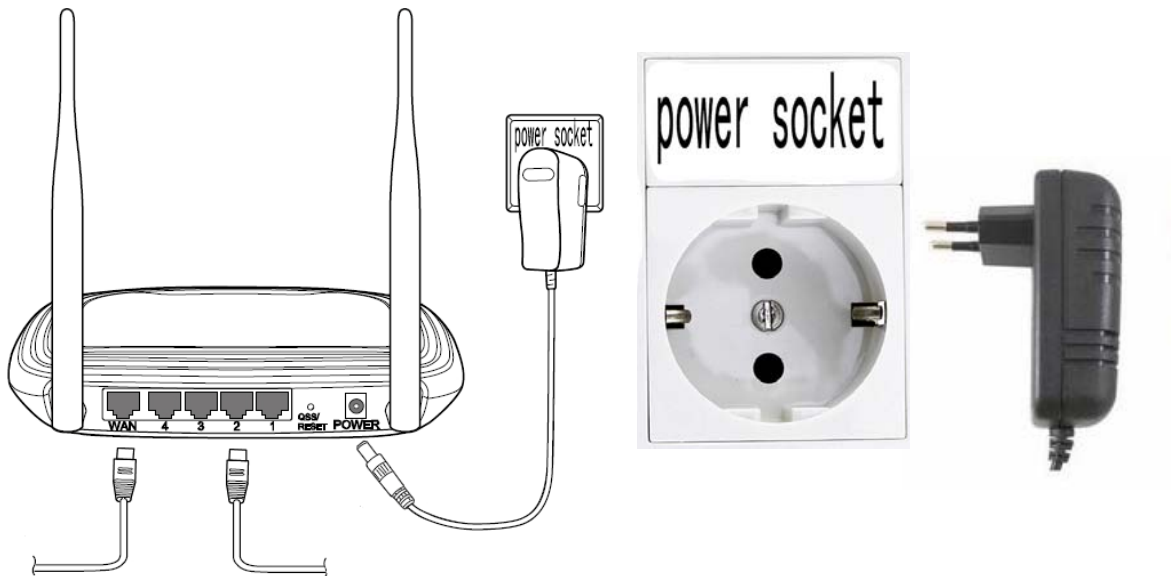
**If the accessories in the color box is damaged or loss, please contact the sales in time.**

## 1.2 Interface Introduction

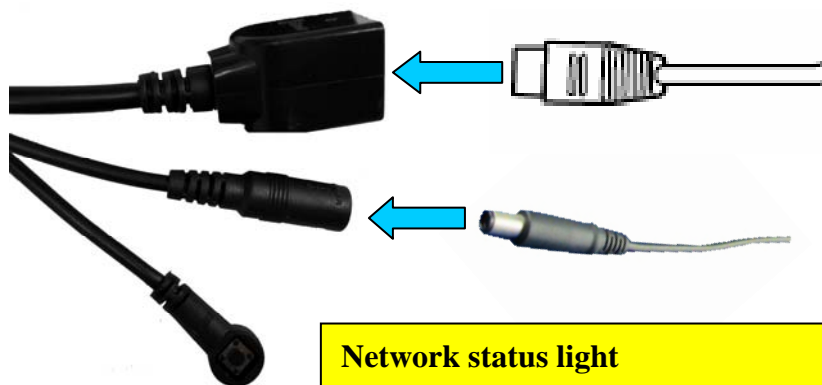


## II. Start The Camera

**2.1 Connect the network cable to the router, and plug the power adapter to the socket.**



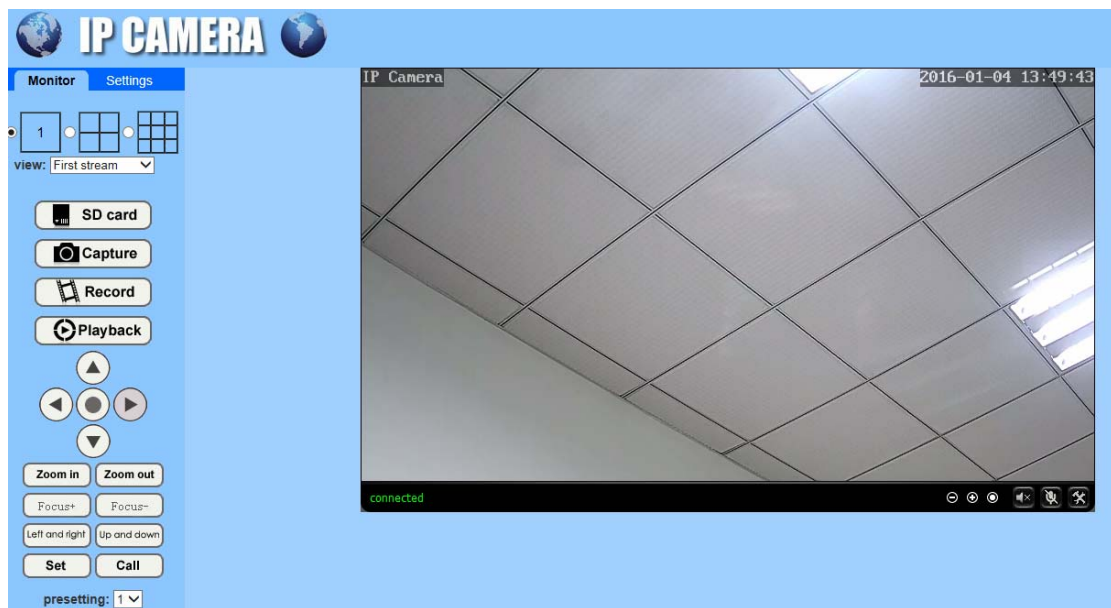
**2.2 Connect the other end of the network cable and the power adapter to the camera to get it work, it will take about 1 minutes for the camera to sel-check.**



**Network status light**  
**Green Light: power light**  
**Yellow light: data transmission status**



### 3.3. Viewing the camera via browser



Viewing the image, configurate the camera

### 3.4. Control the camera in CMS



CMS software can be found in the CD.

## IV. Viewing The Camera Via Mobile APP

4.1 Download the APP “CamHi” in Google Play or APP Store, or scan the QR code to download.



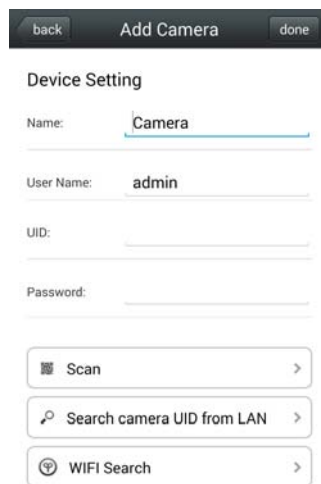
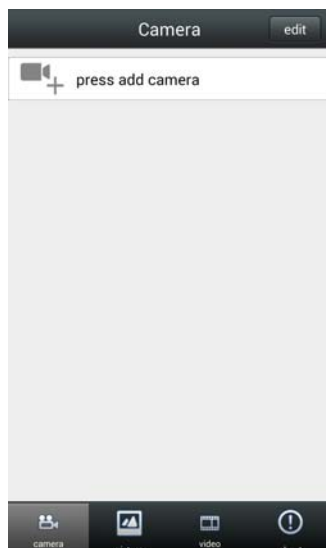
Android

CamHi

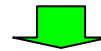


IOS

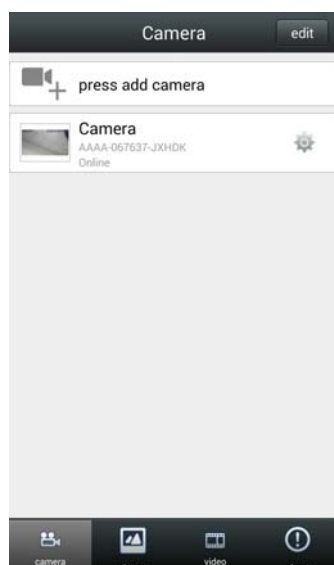
4.2 Click “+” to add camera, then input the camera UID and password (default password is admin)



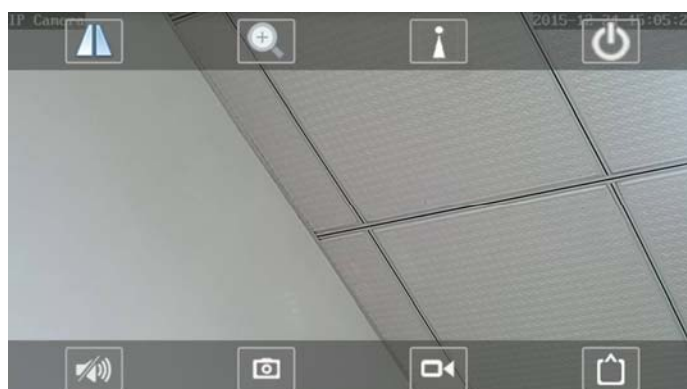
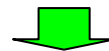
Scan the QR code on the label of the camera to add the camera UID quickly.



4.3 After successfully add the camera, click the camera picture on device list, you will see the real-time video.



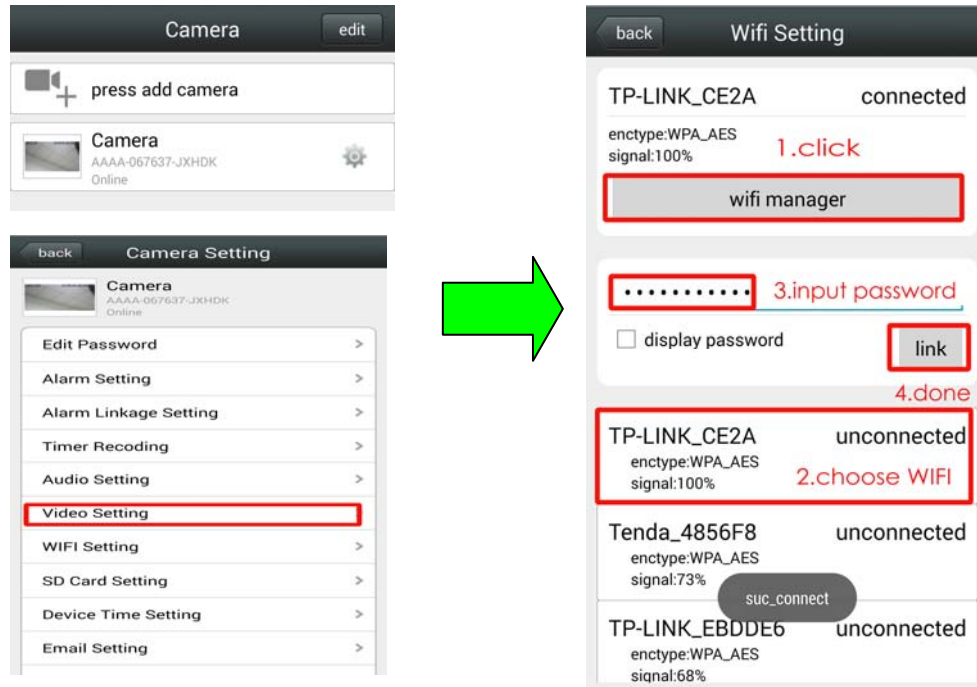
Slide the screen, can rotate the camera.





## V.WIFI Configuration

### 5.1 Click WiFi setting to configure the camera Wifi on mobile phone APP.



### 5.2 Wifi configuration on browser

Click Parameter setting--wifi setting—open WIFI—click search, select the Wifi to be connected, then input the WiFi password, click apply.

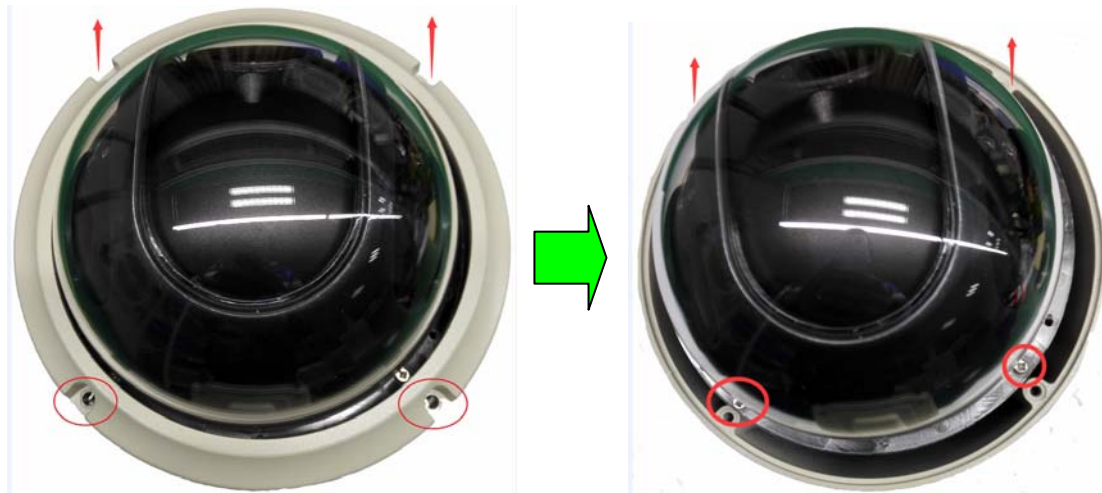


Please remove the network cable after one minutes when the wifi setting is done.

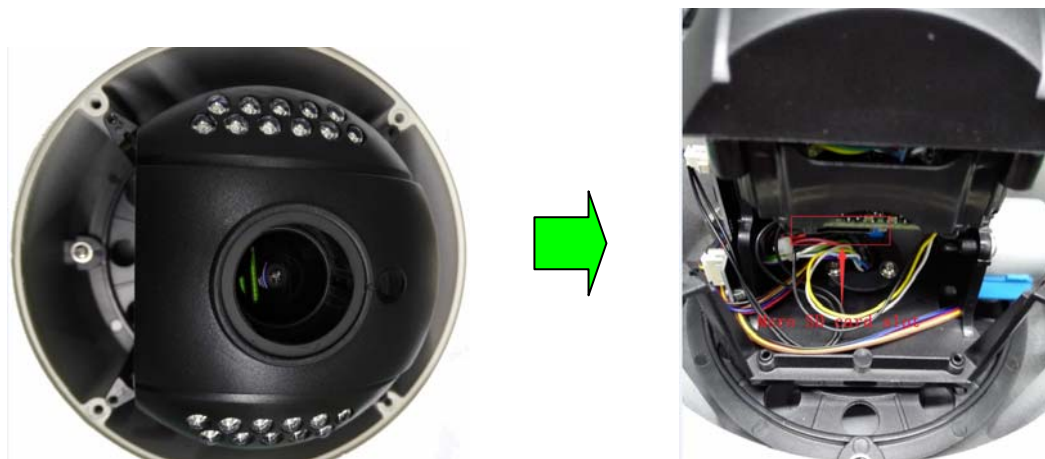


## VI. Install Micro Card

### 6.1 Remove the white circle and the screws

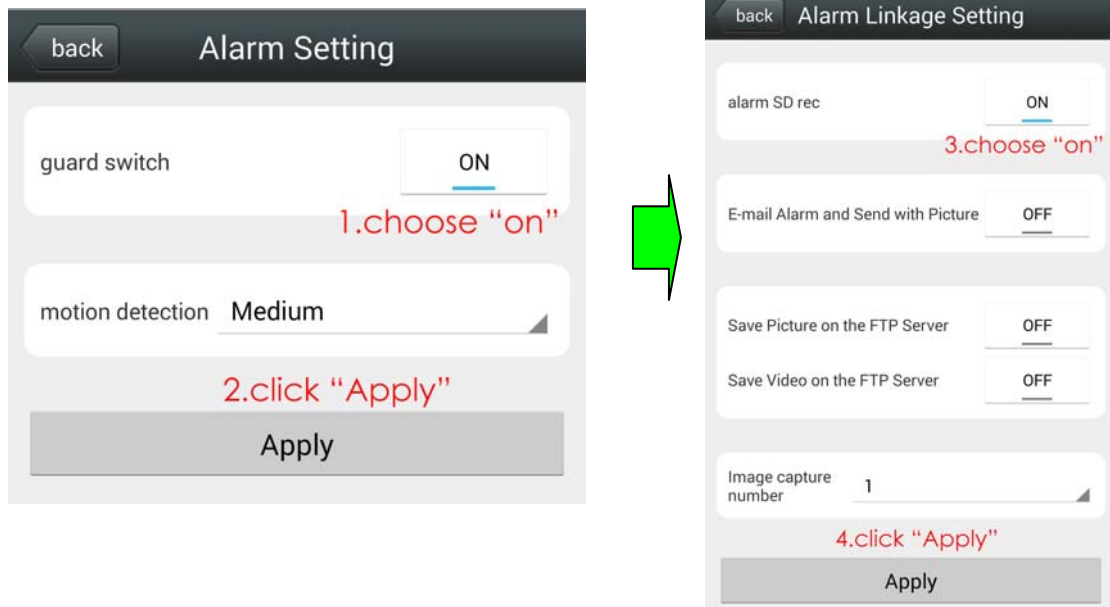


### 6.1 Insert the SD card into the slot.

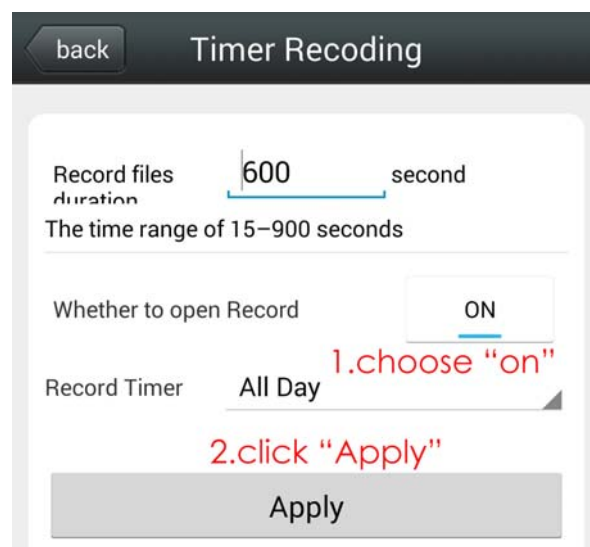


## VII. Micro SD card video setting (mobile phone APP)

### 7.1 Alarm recording setting.



### 7.2 Time recording setting



**Micro SD card recording also can be set up on web browser, please refer to detailed user manual.**

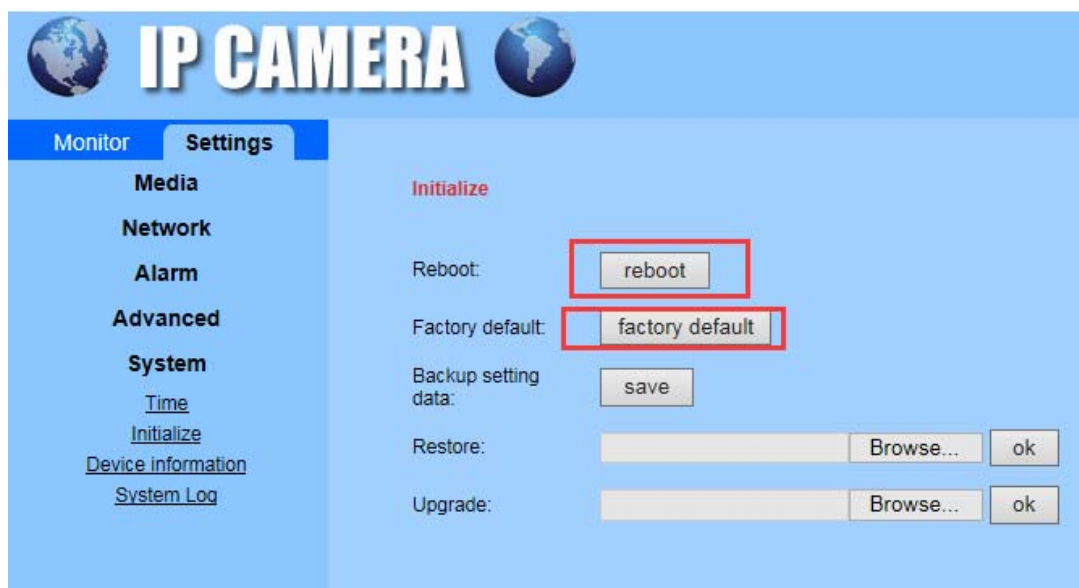
## VIII. Reset the camera to factory default.

### 8.1 Use reset button



Press reset button for 15 seconds, then loosen, the camera will reboot and restore to factory default.

8.2 In web browser, find the Parameter settings-System settings-Initial settings, click to reboot or reset the camera to factory default.



**Detailed instructions, please browse CD information!**